



**Eastern
Mediterranean
University**

"For Your International Career"

www.emu.edu.tr





Lala Mustafa Paşa Mosque

NORTH CYPRUS

A Paradise to Live in: Cyprus is the third biggest island in the Mediterranean and has a special geographical location with its proximity to Europe, Asia and Africa. The University is in Famagusta, the second largest city in the Turkish Republic of Northern Cyprus, a historical city rich in culture and art.

The 35.000 inhabitants of the city are hospitable to students from all over the world. The city offers a wide selection of accommodation, shops, restaurants and cafes, along with many places of historical and cultural interest.

Travel and Visa: Students can get to the Turkish Republic of Northern

Cyprus (TRNC) by air and sea. All flights to North Cyprus are connected via Turkey.

Visa inquiries should be made to the nearest Turkish Embassy/Consulate (www.mfa.gov.tr) where you can obtain information on visa requirements for both Turkey and the TRNC.



EMU Özyay Oral Library

QUALITY EDUCATION

QUALITY EDUCATION IN AN INTERNATIONAL UNIVERSITY

Eastern Mediterranean University (EMU), established in 1979, is a state university with an international outlook. EMU offers internationally recognized English medium undergraduate and graduate degree programs.

EMU is rightfully very proud of her many years of service as the flagship of higher education in the country and the wider region. With world standard academic programs, highly qualified and dynamic academic staff, outstanding infrastructure, and close links with the community, EMU is dedicated to creating an environment with enhanced instructor-student communication, strong university parent-student relations, strong university-employer collaboration, and international accreditations and recognition.

EMU FACTS

- Listed among the best universities of the world by the Times Higher Education
- A state university
- 37 years' experience in education
- 11 faculties and 5 schools offering

undergraduate and graduate degree programs

- 20000 students from 106 different countries and 1100 faculty members from 35 different countries
- English is the medium of instruction
- An opportunity to learn English at the Foreign Languages and English Preparatory School (FLEPS)
- Numerous international academic and cultural workshops, symposiums and conferences organized throughout the year
- More than 30 research centers
- A modern library housing more than 150,000 printed books, thousands of e-books and more than 10,000 online academic journals in comfortable study areas and easy online access to international databases
- A private Beach Club on the shores of the Mediterranean
- The largest conference and cultural center in the region
- Collaboration with more than 200 institutions of higher education from all over the world
- Easy and friendly contact with faculty members

- A strong university-parent-student collaboration
- Modern classrooms, laboratories, highly efficient computer and internet connections
- A magnificent campus university with 200.000 sq.m indoor areas stretching over 3000 acres of land
- Modern and comfortable dormitories that accommodate up to 7500 students
- More than 50 student clubs
- A 3500 seat capacity indoor sports hall, a 5000 seat capacity stadium with a tartan track and 66.500 sq.m outdoor sports area.

MEMBERSHIPS AND ACCREDITATIONS

EMU is a full member of the European University Association (EUA), International Association of Universities (IAU), and Federation of the Universities of the Islamic World (FUIW), Community of Mediterranean Universities (CMU), United Nations Educational Scientific and Cultural Organization (UNESCO) and many other international organizations. The full list of accreditations is available on our official website www.emu.edu.tr.

ACCREDITATIONS, RECOGNITIONS, RANKINGS and MEMBERSHIPS



Eastern Mediterranean University pays special attention to international recognition and boasts numerous accreditations and memberships from prominent international organizations.



Engineering
Accreditation
Commission



National Architectural
Accrediting Board,
Substantial Equivalency



The Foundation for
International Business
Administration Accreditation



Accreditation Agency for Degree
Programmes in Engineering,
Information, Natural
Sciences & Mathematics

MiAK

Mimarlık
Akreditasyon
Kurulu



Agency for Quality
Assurance through
Accreditation of
Study Programs



Teaching
Education
Quality in
Tourism

edexcel
advancing learning, changing lives



Accreditation
Agency in Health
and Social
Sciences



- Among the best 800 universities in the world
- 7th place among Turkish universities
- 173rd among BRICS and Emerging Economy University Rankings
- Among the best 200 young universities in the world

The Times Higher Education World University Rankings 2016-2017 list the 980 top universities in the world. It is the only global university performance table to judge world class universities across all of their core missions – teaching, research, knowledge transfer and international outlook.

ACCREDITATIONS, RECOGNITIONS, RANKINGS and MEMBERSHIPS

ACCREDITATIONS

• ABET: Engineering Accreditation Commission of ABET

The Faculty of Engineering is accredited by the Engineering Accreditation Commission of ABET.

• **ACA: The American Communication Association**
Visual Arts and Visual Communication Design (English), Public Relations and Advertising (Turkish and English) and Radio-TV and Film (Turkish and English) undergraduate programs and Communication and Media Studies, Visual Arts and Visual Communication Design and Digital Media and Film postgraduate programs possess ACA Accreditation.

• AHPGS: Accreditation Agency in Health and Social Sciences

EMU Faculty of Arts and Sciences and Biological Sciences Department AHPGS Accreditation.

• AQAS: Agency for Quality Assurance through Accreditation of Study Programs

EMU English Language Teaching Department and Interior Architecture Department possess AQAS accreditation.

• ASIIN: Accreditation Agency for Degree Programmes in Engineering, Informatics, Natural Sciences and Mathematics

EMU Information Technology Program possess ASIIN accreditation.

• **EDEXEL: Higher National Diploma-HND-UK**
EMU School of Computing and Technology and School of Tourism and Hospitality Management are EDEXEL centers.

• FIBAA: Foundation for International Business Administration Accreditation

EMU Faculty of Business & Economics, Faculty of Tourism, School of Business and Finance, School of Computing & Technology, and School of Tourism and Hospitality Management possess FIBAA accreditation.

• MİAK: Mimarlık Akreditasyon Kurulu

EMU Architecture Department has MİAK accreditation.

• **NAAB: National Architectural Accrediting Board**
EMU Architecture Undergraduate Program has been granted a NAAB Substantial Equivalency.

• **TEDQUAL: Teaching Education Quality in Tourism**
EMU School of Tourism and Hospitality Management possesses TEDQUAL.

• **TPD: Turkish Psychological Association**
EMU Psychology Undergraduate Program possesses TPD accreditation.

RECOGNITIONS

• **YÖK: Turkish Republic Higher Education Board**
All departments of EMU have the accreditation of YÖK.

• YÖDAK: Higher Education Inspection and Evaluation Board

All departments of EMU have the accreditation of YÖDAK.

• UK NARIC: The National Recognition Information Centre for United Kingdom

EMU has UK NARIC accreditation.

RANKINGS

• THE: Times Higher Education

The Times Higher Education world university rankings provide the distinctive list of world's best universities. EMU is ranked in 601-800 band globally. 7th place among Turkish universities, 173rd among BRICS and Emerging Economy University Rankings, among the best 200 young universities in the world.

• **WEBOMETRICS: Ranking Web of Universities**
Eastern Mediterranean University was ranked within the best 5% universities among 25,000 world universities. The university was also placed within the first 7% of 6,000 European Universities which were included in the rankings.

• URAP: University Ranking by Academic Performance

In 2015 URAP evaluations, EMU took its well-deserved place within the best 2,000 universities of the world.

• EDUNIVERSAL: Masters Ranking

Eduniversal ranks the Communication and Media Studies, Banking and Finance, Marketing and the Master of Business Administration (MBA) within the best 200 postgraduate programs in the world.

MEMBERSHIPS

• AACSB: The Association to Advance Collegiate Schools of Business

EMU Business and Economics Faculty is a member of AACSB.

• ACM: Association for Computing Machinery Student Chapter

EMU Computer Engineering Department is a member of ACM.

• AEC: Association European des Conservatoires Academies de Musique et Musikhochschulen

EMU Music Department is a member of AEC.

• ALTE: The Association of Language Testers in Europe

EMU School of Foreign Languages is an affiliate member of ALTE.

• AMS: American Mathematical Society

EMU Mathematics Department is a member of AMS.

• ASEE: American Society for Engineering Edu.

EMU Engineering Faculty is a member of ASEE.

• ASME: American Society of Mechanical Engineers Student Branch

EMU Mechanical Engineering Department is a member of ASME.

• ATLAS: Association for Tourism and Leisure Education

EMU School of Tourism and Hospitality Management is a member of ATLAS.

• City & Guilds

EMU School of Foreign Languages and Faculty of Tourism Gastronomy and Culinary Arts Department are members of City & Guilds.

• CMU: Community of Mediterranean Universities

EMU is a member of CMU.

• EAAE: European Association for Architectural Education

EMU Architecture Department is a member of EAAE.

• EAEEIE: The European Association for Education in Electrical and Information Eng.

EMU Department of Electrical and Electric Engineering is a member of EAEEIE.

• **ECPR: European Consortium for Political Research**
EMU Department of International Relations is a member of ECPR.

• ECREA: European Communication Research and Education Association

EMU Communication Faculty is a member of ECREA.

• EESTEC: Electrical Engineering Students' European Association Student Branch

EMU Electrical and Electronic Engineering Department is a member of EESTEC.

• ELFA: European Law Faculties Association

EMU Faculty of Justice is a member of ELFA.

• ENHR: European Network for Housing Research

EMU Architecture Faculty is a member of ENHR.

• ESTIEM: European Students of Industrial Engineering and Management

EMU Industrial Engineering Department is a member of ESTIEM.

• EUA: European University Association

EMU is a member of EUA.

• EUPRERA: The European Public Relations Education and Research Association

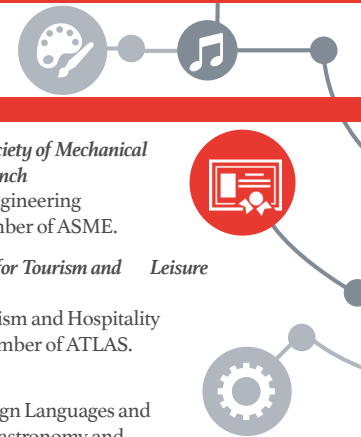
EMU Communication Faculty is a member of EUPRERA.

• FUIW: The Federation of the Universities of the Islamic World

EMU is a member of FUIW.

• IAU: International Association of Universities

EMU is a member of IAU.





SCHOLARSHIPS

SCHOLARSHIPS AND SUPPORT

International Student Scholarship System

A large portion of our international students are on 50% and 25% scholarships. During the application to the academic programs the students indicate that they wish to be considered, the decisions are made based on the academic performance of the candidate and academic program applied. The EMU admission decision will indicate if the student will receive a partial tuition waiver.

Scholarships at the Undergraduate Level:

1. All-inclusive scholarship

This scholarship covers tuition for the regular duration of the academic program, free accommodation in a EMU dormitory and 3 meals a day. This is a very competitive scholarship. It is for undergraduate applicants that are in the top 1% among the secondary school graduates in their home country. *Applicants may send their application letter and supporting documents to

scholarships@emu.edu.tr at least 60 days prior to the beginning of the Fall semester. (Late 100% scholarship applications cannot be considered)

2. Tuition Fee Waivers

This scholarship only covers tuition for the regular duration of the academic program. It is for undergraduate applicants that have shown high performance in their home country in university entrance system. Only 2 best students among applicants from each country may receive this scholarship. *Applicants may send their application letter and supporting documents to scholarships@emu.edu.tr at least 60 days prior to the beginning of the Fall semester. (Late 100 % scholarship applications cannot be considered)

3. Tuition Fee Reduction

This scholarship only covers 50% or 25% of the tuition (reduction based on the approved criteria) for the regular duration of the academic program. Applicants that have university entrance results in their home country that meets the criteria for the academic program that their applying may apply. Application for this scholarship should be made on the EMU application.

High Honour Award

The first ten top ranking students of each Faculty and School are granted the "High Honor Award", average (GPA) of 3.50 and a CGPA of 3.00 and above are minimum requirements to be considered. The highest ranking student is awarded a onetime bonus equal to 3 times monthly minimum wage, while the second ranking gets a onetime bonus equal to 2 times monthly minimum wage and the subsequent ones receive a onetime bonus equal to monthly minimum wage.

Scholarships for Master's Degree Programs

All international students accepted to master's degree programs are awarded 50% tuition fee reduction. Additionally they can apply to Research Assistantships. Full time and part time

assistantships are available. A full-time research assistant gets exemption from tuition fees as well as a salary. A part-time research assistant gets 50% reduction on tuition fees and a salary. Application for research assistantships is made upon arrival to the relevant academic department.

Scholarships for Ph.D. Programs

100 % or 50 % tuition fee scholarship opportunities are available for new international students in the PhD programs. The details of graduate scholarship application can be found <http://www1.emu.edu.tr/scholarships-postgraduate>. Ph.D. students can also apply to Research Assistantships. This is very competitive as all graduate students can apply to full time and part time assistantships.

Scholarships for Undergraduate, Master's and Ph.D. programs

1. TRNC Government Scholarship

This competitive scholarship covers tuition and free accommodation. Successful students are entitled to apply for scholarships for the Turkish Republic of Northern Cyprus (TRNC) scholarships through TRNC consular missions abroad (<http://mfa.gov.ct.tr/consular-info/missions-abroad/>) or Republic of Turkey consular missions abroad (<http://www.mfa.gov.tr>). For application details, maintenance policies and any other further details visit <http://www1.emu.edu.tr/scholarships>.

2. Sports Grant

EMU offers sports grants for exceptional performance in individual or team sports. The grant covers full or partial education from the tuition fee and/or accommodation fee of EMU dormitories.

Discounts

Siblings and couples studying at EMU receive discount on their tuition fee payments if they do not already have a scholarship or discount.



COLLABORATIONS and RESEARCH

EXCHANGE AND COLLABORATIONS

Student Exchange: The exchange and collaboration program allows students to take courses abroad for one semester. We have exchange agreements with various universities in the U.S.A, Canada, Europe, and Asia. In total, EMU has more than 200 academic collaboration agreements.

<http://io.emu.edu.tr/exchange-programs>

University of Warwick: EMU is also an overseas center for the University of Warwick, UK and offers MSc programs in Engineering Business Management and Supply Chain and Logistics Management. Students can complete this program in just one year and can take courses in the UK as well as in Cyprus. <http://warwick.emu.edu.tr>

Queen's University: The Department of Banking and Finance has an agreement with the John Deutsch International Executive Programs

of Queen's University (Canada) that enables graduate students to earn the Queen's University Certificate in Investment Appraisal and Risk Analysis while studying at EMU. By taking three courses from the discipline of investment appraisal at EMU, students qualify to take the Queen's University comprehensive examination in this field at EMU, and if successful, then are awarded this professional certification.

RESEARCH AND TEACHING

EMU recruits highly qualified scholars and researchers. Majority of the professors teaching at the university have received their Doctoral degrees in the most prestigious institutions in the world.

The University encourages and promotes scholarly research and publications in all academic fields of study. Many faculty members are also actively involved in community affairs, as professional writers, editors, advisors to the government, or

consultants to businesses and industrial corporations; hence they are able to bring to their teaching the expertise and professionalism that comes from their experience.

OUR GRADUATES

EMU graduates make a major contribution to the workforce. To date, EMU has over 45,000 graduates that form a strong network in business life. Many graduates also pursue their graduate studies in universities in different countries.

Hence, EMU plays a vital role in the growth and development of the economy where our alumni are located. EMU also collaborates with many companies and institutions around the globe in numerous projects.

The EMU Alumni Office also helps graduates find jobs at different locations in the world and keeps in constant contact with them. EMU cares about her students and about their future.





Dr. Fazıl Küçük Faculty of Medicine

ADMISSION

ADMISSION

EMU enrolls students during Fall and Spring semesters. Therefore, applications to undergraduate and graduate programs are accepted twice a year.

Undergraduate Programs:

Applicants must submit a certified copy of Higher Secondary School Certificate or Intermediate Certificate or its equivalent, demonstrating that he/she has satisfactorily graduated from secondary school, and must arrange for other relevant certified documents, such as transcripts or detailed mark sheets, to be released to EMU.

Graduate Programs: Applications for the graduate programs at EMU are accepted twice a year for Fall and Spring semesters. Prospective applicants are

required to have a bachelor's degree for master's programs with a CPGA ≥ 2.50 out of 4.00. For some programs such as professional degree programs, CGPAs between 2.00-2.49 may be acceptable, subject to Faculty Board decision. Applicants for Doctor of Philosophy (PhD) programs must possess a master's degree. Further details on additional program specific requirements are available from the academic departments hosting the program.

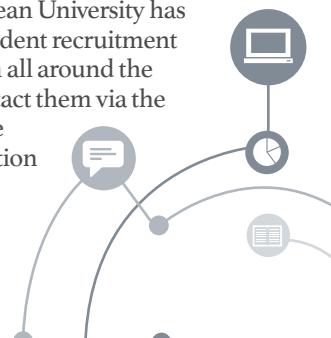
English Proficiency: All applicants, for whom English is a second language, are required to take the EMU English Proficiency Exam, or present documents demonstrating their English proficiency level. Those who lack the required proficiency level in English are required to pursue an intensive EDEXCEL accredited English program

offered by the English Preparatory School.

Graduate students are placed in supplementary non-credit English language courses according to their levels. Students who have proof for English proficiency can register directly for freshman classes without enrolling in the English Preparatory Year Program.

INTERNATIONAL REPRESENTATIVES

Eastern Mediterranean University has agreements with student recruitment representatives from all around the world. You may contact them via the EMU's main website to get more information or help with your application.





EMU Beach Club

STUDENT LIFE AND SOCIAL ACTIVITIES

STUDENT LIFE AND SOCIAL ACTIVITIES

EMU is pleased to offer a complete educational experience on her magnificent campus, with a modern library, modern classrooms, computer laboratories with high-speed internet connection, research labs, research centers, dormitories, a student activity center, student clubs, sport complexes, cafeterias and restaurants.

The campus also has a bookstore, a health center, a psychological guidance and research center, a post office, banks and ATMs, laundry services and internet cafes.

Life at EMU is fun. Students have the opportunity to participate in a variety of extra-curricular activities and may join a wide range of social and cultural events in the university.

There are numerous student clubs and societies at EMU including tennis, basketball, volleyball, football, handball, cricket, chess, ceramics, journalism, art, science and culture, literature, folklore, drama and animation, music, cinema, photography and many more.

Also, every year EMU organizes the 'International

Spring Festival' which includes all kinds of social, cultural and sport activities.
<http://activity.emu.edu.tr>

STUDENT SERVICES OFFICE

The Student Services Office has expanded the operations of the Student Information Center so that all students can benefit from it more frequently. As a modern information center, the Student Services Office aims to raise students' participation in social and cultural activities and solve problems that students may encounter during the academic year with the help of its highly skilled staff. In this regard, the office offers the following services:

- Immigration Procedures
- Accommodation
- Health Insurance
- Information Services
- Call Center
- Student ID card

ACCOMMODATION

EMU has 15 on-campus dormitory complexes that can accommodate over 7500 students. New students are given priority in placement. Students may also rent flats or rooms in private hostels in Famagusta. Frequent university-owned shuttle services are available between the

campus and the city center.
<http://dormitories.emu.edu.tr>

INTERNATIONAL OFFICE

The International Office aims to support international students. The multilingual staff is more than happy to answer questions that students may have about life at EMU and in North Cyprus. The office also coordinates the activities of the many International Societies and organizes numerous international activities and events throughout the year.
<http://io.emu.edu.tr>

The goal of the International Office is to assist new students with their transition into campus life and provide them with a network to encourage academic and social exploration for as long as needed.

International Summer School:

EMU's International school runs through July and September and enables its participants to get a taste of life in North Cyprus whilst benefiting from a wide range of courses and social and cultural activities. Offering Pearson Edexcel assured programs with an international recognition, Eastern Mediterranean University International Summer School also provides the students the unique opportunity to receive an international EDEXCEL certificate. <http://summer.emu.edu.tr>



PROGRAMS

Department	Associate	Bachelor	Masters		PhD	No of Courses		
			With Thesis	Without Thesis		Master With Thesis	Master Without Thesis	PhD
Faculty of Architecture								
Architecture		✓	✓	✓	✓			
Interior Architecture		✓	✓	✓				
Urban Design			✓	✓				
Faculty of Arts & Sciences								
Mathematics and Computer Science		✓						
Molecular Biology and Genetics		✓						
Psychology		✓						
Translation and Interpretation		✓						
Applied Mathematics & Computer Science			✓		✓	7		7
Chemistry			✓		✓	7		7
Developmental Psychology			✓	✓		7	10	
Information Systems				✓			10	
Mathematics			✓		✓	7		7
Physics			✓		✓	7		7
Faculty of Business & Economics								
Business Administration		✓	✓	✓	✓	12	14	9
Economics		✓	✓	✓	✓	7	10	8
International Relations		✓	✓	✓	✓	7	10	8
Political Science		✓						
Public Administration		✓						
Banking and Finance			✓	✓		7	10	
Banking and Finance, Online			✓	✓		7	10	
Marketing Management			✓	✓		8	10	
Finance					✓			8
School of Business and Finance								
Banking and Finance		✓						
Banking and Insurance		✓						
International Finance		✓						
International Trade and Business		✓						
Management Information Systems		✓						
Marketing		✓						

Department	Associate	Bachelor	Masters		PhD	No of Courses		
			With Thesis	Without Thesis		Master With Thesis	Master Without Thesis	PhD
Faculty of Communication and Media Studies								
Animation and Game Design		✓						
Public Relations and Advertising		✓						
Radio-Tv and Film Studies		✓						
Visual Art and Visual Communication Design		✓		✓			10	
Communication and Media Studies			✓		✓	7		7
Digital Media and Film				✓			10	
Faculty of Education								
English Language Teaching		✓	✓	✓	✓			7
Guidance and Psychological Counseling		✓						
Educational Administration and Supervision			✓			7		
Information and Communication Technologies in Education			✓	✓		7	10	
Faculty of Engineering								
Civil Engineering		✓	✓		✓			7
Computer Engineering		✓	✓	✓	✓	7	10	7
Software Engineering		✓						
Electrical and Electronic Engineering		✓	✓		✓	7		7
Information Systems Engineering		✓						
Industrial Engineering		✓	✓	✓	✓	7	10	
Management Engineering		✓						
Engineering Management				✓			10	
Mechanical Engineering (JPBU-University of Gazi)		✓						
Mechanical Engineering		✓	✓		✓	7		
Mechatronics Engineering		✓						
Faculty of Health Sciences								
Nutrition & Dietetics		✓						
Physiotherapy and Rehabilitation		✓						

PROGRAMS

Department	Associate	Bachelor	Masters		PhD	No of Courses		
			With Thesis	Without Thesis		Master With Thesis	Master Without Thesis	PhD
Faculty of Medicine								
Medicine		✓						
Faculty of Pharmacy								
Pharmacy (B.Pharm.)		✓						
Pharmacy (Pharm.D.)		✓						
Pharmacy (Pharm.D.) with Kerman University		✓						
Faculty of Tourism								
Hotel Management (Online)				✓			10	
Tourism Management			✓	✓	✓	7	10	7
Tourism and Hospitality Management		✓						
School of Tourism and Hospitality Management								
Tourism and Hospitality	✓							
Tourism and Hospitality Management		✓						
School of Computing and Technology								
Information Technology		✓		✓			10	

Program duration: It takes on average 2 years to complete an associate degree program. An additional year may be required for English proficiency. It takes on average 4 years to complete a bachelor's degree program. An additional year may be required for English proficiency. Master's programs with thesis and Ph.D. programs require the successful completion of courses and successful defense of a thesis. Additional year or two may be required for English proficiency. Master's programs without thesis require successful completion of courses and a term project. Additional year or two may be required for English proficiency. About program's duration: It takes on average 2 years to complete an associate degree program. An additional year may be required for English proficiency. It takes on average 4 years to complete a bachelor's degree program. An additional year may be required for English proficiency. Master's programs with thesis and Ph.D. programs require the successful completion of courses and successful defense of a thesis. Additional year or two may be required for English proficiency. Master's programs without thesis require successful completion of courses and a term project. Additional year or two may be required for English proficiency.



EMU Computer Center





NORTH CYPRUS



NORTH CYPRUS



Official name: Turkish Republic of Northern Cyprus (TRNC)
Capital: Lefkoşa / Nicosia
President: Mustafa Akıncı
Official languages: Turkish (English is widely spoken)
Geographical position: Middle East, eastern part of the Mediterranean Sea

Time zone: UTC +3
Official currency: Turkish Lira (TRY)
Seasons: Long dry summers and short, rainy winters
Average annual temperature: 19°C
Swimming season: April-October
Country Code: +90 Area Code: 392



Transportation by Air: Flights to Ercan Airport (Airport code - ECN), North Cyprus are only available from Turkey and usually take just over an hour.



Transportation by Sea: the coastal resorts of southern Turkey can be reached in just a few hours by sea.



**Eastern
Mediterranean
University**
"For Your International Career"

www.emu.edu.tr

M A P

- 1** Central Lecture Halls | C4
- 2** Department of Civil Engineering | C5
- 3** Department of Computer Engineering | B6
- 4** Department of Electrical & Electronic Engineering | B5
- 5** Department of Industrial Engineering | B5
- 6** Department of Mechanical Engineering | C4
- 7** Eastern Mediterranean Doğa College | B4
- 8** Eastern Mediterranean Doğa Primary Sch. | A3
- 9** Faculty of Architecture | C5
- 10** Faculty of Arts & Sciences | C4
- 11** Faculty of Business & Econ.- Sch. of Business & Finance | C3
- 12** Faculty of Communication & Media Studies | C4
- 13** Faculty of Education | C2
- 14** Faculty of Health Sciences - Sch. of Health Services | A3
- 15** Faculty of Law - School of Justice | C4
- 16** Faculty of Medicine | A4
- 17** Faculty of Pharmacy | A3
- 18** Faculty of Tourism | C5
- 19** Foreign Language & English Preparatory School and Annex | B3
- 20** Institute of Graduate Studies & Research | C4
- 21** Rector's Office | C3
- 22** School of Computing & Technology | D3
- 23** Visual Arts & Vis. Com. Design - Techno Park | B4
- 24** Akdeniz Dormitory | B7
- 25** Alfam Dormitory | B6
- 26** Alfam Vista Dormitory | B6
- 27** EMU 1 Dormitory | C1
- 28** EMU 2 Dormitory - EMU Dorm. Directorate Office | B7
- 29** EMU 3 Dormitory | A7
- 30** EMU 4 Dormitory | A6

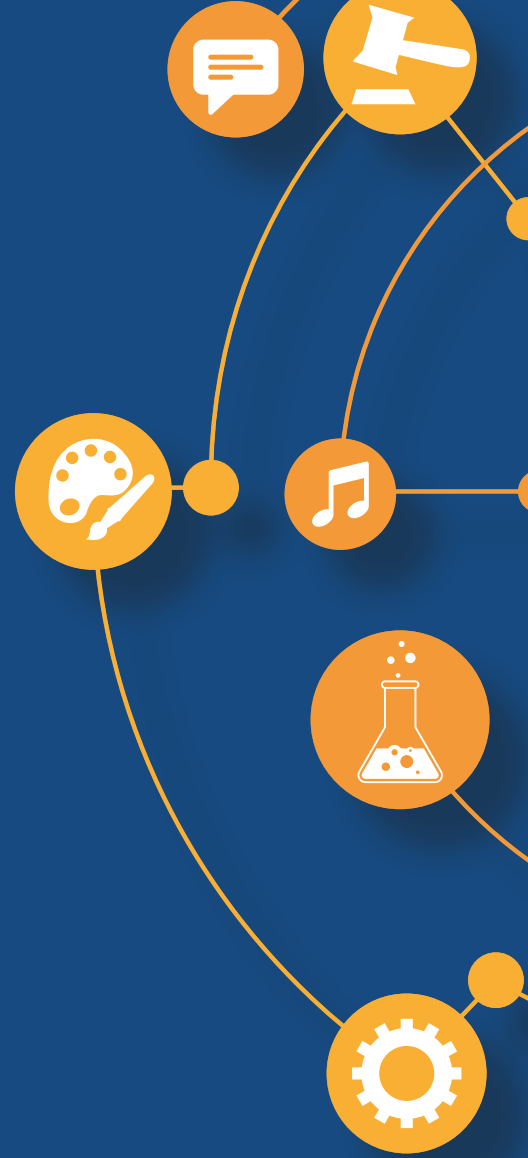
- 31** Halide Edip Guest House - I | B7
- 32** Home Dorm | B8
- 33** Kamacıoğlu Dormitory | B5
- 34** Longson Dormitory | B6
- 35** Marmara Dormitory | B6
- 36** Namık Kemal Guest House - II | B7
- 37** Prime Living Dormitory | A8 and B8
- 38** Ramen Dormitory | A8
- 39** Sabancı Dormitory | C2
- 40** T.C. Yurtkur Necmettin Erbakan Dormitory Block 1 | B7
- 41** T.C. Yurtkur Necmettin Erbakan Dormitory Block 2 | B7
- 42** Uğursal Dormitory | B6
- 43** Accounting Affairs & Personnel Affairs Office | B4
- 44** Administrative Facilities | D2
- 45** Alumni Comm. & Career Development Office | C3
- 46** Church | B7
- 47** Computer Center | C4
- 48** Continuing Education Center - EMU Coop Ltd. | C2
- 49** DAÜ-TV & Radio | D3
- 50** Health Center - Psy. Counselling Guid. & Res. Center | C6
- 51** International Office | C3
- 52** Lala Mustafa Paşa Sports Complex | B3
- 53** Library | C3
- 54** Mosque | B5
- 55** Open Air Sports Facilities | B4
- 56** Registrar's Office | C4
- 57** Social & Cultural Activities Center | D3
- 58** Stadium | B5
- 59** Table d'hote Restaurant | C4
- 60** Technical Affairs | B5

WHEELCHAIR ACCESS INFORMATION

- Full access to all floors
- Mostly accessible
- Ground floor only
- Toilets accessible to wheelchair users within building
- Entrance suitable for wheelchair access
- Entrance with ramp
- Slope over 10%
- Car parking space for disabled drivers



www.emu.edu.tr



Print-Design: EMU Printing-house-Selma Beyaz, Photos: Ismail Gökçe (04.2017) T. No:545618



**Eastern
Mediterranean
University**
"For Your International Career"

www.emu.edu.tr



facebook



/eastern.med.univ

twitter



/emuofficial

YouTube



/eastmeduniv

Tel: (+90) 392 630 3201/3202/3203
Fax: (+90) 392 630 4033
E-mail: promotion@emu.edu.tr
Famagusta / North Cyprus

