

Pursue your new

adventure.

unsw.to/studyabroad

What's inside:

| | |
|-----------------------------------------------|------------|
| Why Study in Sydney | p4 |
| Pursue your new adventure at UNSW | p10 |
| UNSW: A world leader with loads of fun | p12 |
| Flexible Study Plans | |
| Study plans that suit you best | p14 |
| Tailor your term | p16 |
| Courses and Programs | p20 |
| Study Abroad Program | p24 |
| Exchange Program | p30 |
| Study Abroad Research Program | p34 |

Aerial shot of Coogee Beach, Sydney



CRICOS Provider Code: 00098G | ABN: 57 195 873 179
© UNSW Sydney 2020

DISCLAIMER: UNSW programs, courses and any arrangements for programs and fees including staff allocated, as stated in the guide or any other University publication, announcement or advice of the University, are an expression of intent only and are not to be taken as a firm offer or undertaking. The University reserves the right to make alterations to any matter contained within this publication without notice. Information in this Guide is accurate as of March 2020, but may be amended without notice by the University. All costs and fees are provided in Australian Dollars (A\$). Any agreement with the University does not remove the right to take action under Australia's consumer protection laws.

COMPLIANCE: The Education Services for Overseas Students (ESOS) Act 2000 sets out the legal framework governing delivery of education to overseas students studying in Australia on a student visa. UNSW in providing education services to overseas students complies with the ESOS Framework and the National Code of Practice for Registration Authorities and Providers of Education and Training to Overseas Students 2018 (The National Code). A description of the ESOS framework can be found at the following link: international.unsw.edu.au/regulatory-information/Pages/regulatoryinformation.aspx

I love the vibe here. It's near the beaches and I love surfing, so that's awesome. Transportation is so good, and I can get everywhere quickly and easily. It's really simple to meet people - there are lots of different events going on, so it's easy to fit in.

—
Yilin Yang (Taiwan)

Most university programs in Australia go through to July and that would not allow me to do a summer internship back home in America. But since they just switched to the 3+ term system here at UNSW, it works out perfectly for me.

—
Allyson Ehlers (USA)

Sydney is so beautiful. I find it a very multicultural city which is great, especially with all the different food options! The people are really friendly and always smiling. Sydney is a wonderful city and UNSW is a great university. There are so many resources here for students.

—
Juan Camillo Zapata-Trujillo (Colombia)



Live the dream and study in Sydney.

Studying abroad is about more than just your degree – it's about meeting new people, enjoying new experiences and shaping your personality as well as your future.

And where better to do that than UNSW Sydney? If you've ever imagined studying just minutes from world-famous beaches while still being on the doorstep of a bustling international city, then UNSW Sydney is the place for you.

Come and expand your education, boost your work opportunities and experience a lifestyle that seamlessly combines sun, surf and study. And what's more, our innovative academic calendar aligns well with Northern Hemisphere university calendars. So, you can study abroad when it suits you.

We look forward to welcoming you Down Under at UNSW Sydney soon.

Sydney, one of the world's best cities.

Sydney. It's one of the best. And that's not just according to us. It's rated as the third most liveable city in the world*.

What makes it so great? Well, take a look. With a stunning harbour and year-round amazing weather, it's easy to see why people fall in love with it.

But Sydney is more than just a pretty face. It offers countless business and career opportunities, it's Australia's financial and economic powerhouse, plus it's a multicultural, global city.

There's always something to do in Sydney, and UNSW is right in the heart of it all. Come join in.

*Economist Intelligence Unit's Global Liveability Index, 2019



Sydney downtown

Feel safe and welcome.

G'day. Hello. Hi. How's it going? Get used to Australians greeting you like this. It's how we do it here. Aussies are known for being friendly and you'll find a smile wherever you go. Plus, Sydney was ranked fifth safest city in the world in 2019**.

It's a multicultural city full of people from all over the world. So, it will feel like a home away from home, no matter where you're from. And the best bit about living in a multicultural city? The food. You can find any food you want here. There's Chinatown, Spice Alley, Little Italy and an array of fresh food markets all within easy reach.

Bring your appetite. You'll need it.

Jumpstart your career connections in the business capital of Australia.

Sydney is home to more global firms than any other Australian city. And as a gateway to Asian economies, you'll find many valuable networking opportunities to help you stand out in the global job market.

**Economist Intelligence Unit Safe Cities Index 2019

Take a break from the books.

There's always something fun and exciting happening in Sydney to take your mind off your studies - from concerts in the Opera House, to free events including Vivid light and musical festival, Chinese New Year celebrations and the multicultural Parramasala.

Or if you're more into sport, there are top class sporting events including cricket, soccer, and rugby. We even have our own football here called Aussie Rules.

For the more artistic visitors, there are eclectic theatre productions, local and international music acts, and arts and culture exhibitions to keep you entertained and inspired all year round.

And if you just want a cup of coffee and a quiet place to sit, Sydney's café culture is hard to beat.

Get amongst the fun in Sydney.

whatson.cityofsydney.nsw.gov.au



Bondi Beach, Sydney

Sydney on a budget.

On a budget? No worries. There are lots of affordable indoor and outdoor activities to enjoy in Sydney.

Pop into a free art gallery, catch a movie at the local cinema, set off on a coastal walk, snorkel or surf at the beach, or enjoy a budget-friendly lunch or dinner in one of our neighbouring suburbs.

Explore Sydney's surroundings.

Sydney is all about the outdoors. And it's more than just beaches.

Grab a picnic and head to one of the beautiful public parks for a barbecue with friends. Or if you're up for a daytrip or weekend adventure, the Blue Mountains to the west of Sydney, the Royal National Park to the south or stunning Palm Beach in the north are great for a getaway. And of course, there are those beautiful beaches to the east.

Fall in love with Sydney.

international.unsw.edu.au/sydney-worlds-best



Sydney Harbour Bridge during Vivid Sydney light festival



Like what you see? Here's a bit more about Sydney.

The best bits.



Sydney is the 9th best city in the world.
QS Best Student Cities Index, 2019



There are over 100 beaches in Sydney.



Sydney has an average of 236 days a year with sun.



There are over 250 languages spoken in Sydney.



31.7% of Sydney's population is born overseas.



The Sydney Harbour Bridge is also called "the coat hanger".



More international students study in Sydney than anywhere else in the world.



The Sydney Opera House hosts 40 events a week.

Aussie slang

| Word | | Meaning |
|-----------|---|------------------------------------------------------------------|
| Lappy | > | Laptop <i>Uh-oh! My lappy is almost out of juice.</i> |
| Bevy | > | Alcoholic beverage <i>Anyone free for a couple of bevies.</i> |
| Yeah, nah | > | No |
| Na, yeah | > | Yes |
| Barbie | > | Barbecue <i>Let's have a barbie on Sunday.</i> |
| Arvo | > | Afternoon <i>I can't come. I've class this arvo.</i> |
| Maccas | > | McDonald's <i>Who wants Maccas drive-thru?</i> |

Live in the heart of it all.

UNSW has the best of Sydney right at its doorstep. The city centre and its global businesses are just a short light rail trip away. Or if you need a break from the books, the beaches at Bondi and Coogee are not far from campus. Up for some sightseeing? The famous Sydney Opera House and Sydney Harbour Bridge are so close you can see them as many times as you like.

Plus, there are plenty of food options off-campus with China Town, Thai Town, Spice Alley and more only a bus ride away.

All this and more is easy to get to thanks to Sydney's public transport system. There are trains, buses, ferries and light rail at all hours of the day. And if you want to make the most of this beautiful city, jumping on a bike or walking will help you take it all in at your own pace.

But what about getting to the main campus? Easy. There's a new Light Rail network that's making it even easier to get to UNSW. Plus, there are 1,700 buses to and from Central station every week.

Make the most of your time in Sydney.

discoversydney.com.au

sydney.com.au

Sydney Centre ✓
20 minutes by bus

✓ **UNSW Art & Design**
10 minutes by bus.

Bondi Junction ✓
20 minutes by bus

Bondi Beach >>
20 minutes by car

✚ **UNSW Canberra**
3 hours by car

✚ **Sydney Airport**
20 minutes by car

UNSW Pathways ✓

Coogee Beach >>
8 minutes by bus

The UNSW Experience.

A top 50 university with fantastic campus life!



UNSW main walkway

Campus life

Walk to the beach. Tram to the city. Hang out on campus.

Campus facilities

You'll find dozens of cafes and restaurants, banks, ATMs, a post office, supermarket, food cooperative, pharmacy, medical centre, dentist, libraries, a fitness and aquatic centre, sports fields and courts!

Study areas

We've got indoor computer labs and outdoor study areas so you can find the right vibe to suit your study style. Our outdoor areas have power outlets to charge your devices, and our whole campus has free Wi-Fi.

Student Association, Clubs and Societies

Arc is our student association run by students for students. With over 300 clubs and societies, you'll find a group that's right for you! Get amongst it. arc.unsw.edu.au

Social activities

Make the most of your time here and see some of Australia's natural wonders, take a weekend trip to the Blue Mountains, the Royal National Park or Hunter Valley, go whale-watching, surfing and more.

Religious centre

We welcome students from all religious backgrounds to our interfaith religious centre. Chaplains conduct services and studies and offer spiritual counselling.

Staying safe

Student safety is our number one priority. We provide 24/7 security services and have an app to help: StaySafe@UNSW. Get the details at international.unsw.edu.au/life-at-unsw

The Academics:

UNSW Sydney is an internationally acclaimed teaching and research powerhouse. Take a look at what makes UNSW one of the best.



38th in the world for Academic Reputation

QS World University Rankings, 2020



43rd in the world

QS World University Rankings, 2020



UNSW educated four of the top 10 young rich listers in Australia

AFR Young Rich List, 2019



23 subjects ranked top 50 in the world

With Law 14th & Accounting and Finance 15th

QS World University Rankings by Subject, 2020



22nd most international university in the world*

Times Higher Education Rankings, 2020

*Based on numbers of international staff and students, and research papers with at least one co-author from another country.



No.1 in Australia for Research

UNSW received more top ratings in broad fields of research than any other Australian university

Excellence in Research in Australia report, 2018/19

Flexible Study Plans that fit with your current studies.

Our innovative calendar makes it easy for you to plan your studies to suit your academic needs and your timeframe. We have three standard terms as well as a Summer (January) term and a Winter (August) term. So, you can choose between a Standard Term, a Tailored Term, a Double Term or one of four year-long options.

Take a look at our calendar and see which term suits you.

| Term | UNSW credits | ECTS | Number of courses | Orientation date | Start date | End date | Exchange CRICOS Code | Study Abroad CRICOS Code | | | 2021 | | | | | | | | | | | | 2022 | | | | | | | | | | | |
|-----------------------------------|--------------|-------|-------------------|------------------|------------|-------------|----------------------|--------------------------|--|------------------------|------|-----|-----|-----|-----|-----|-----|-----|-----|-----|-----|-----|------|-----|-----|-----|-----|-----|-----|-----|-----|-----|-----|-----|
| | | | | | | | | | | | JAN | FEB | MAR | APR | MAY | JUN | JUL | AUG | SEP | OCT | NOV | DEC | JAN | FEB | MAR | APR | MAY | JUN | JUL | AUG | SEP | OCT | NOV | DEC |
| Short Course Programs | | | | | | | | | | Short Course Programs | | | | | | | | | | | | | | | | | | | | | | | | |
| Summer (January) | 6 | 7.5 | 1 | 4 Jan | 4 Jan | 6 Feb | Program Not Open | N/A | | | | | | | | | | | | | | | | | | | | | | | | | | |
| Winter (August) | 6 | 7.5 | 1 | 12 Aug | 16 Aug | 10 Sep | Program Not Open | N/A | | | | | | | | | | | | | | | | | | | | | | | | | | |
| Term 2 | 18 | 22.5 | 3 | 27 May | 31 May | 28 Aug | Program Not Open | 097354E | | | | | | | | | | | | | | | | | | | | | | | | | | |
| Semester-long Programs | | | | | | | | | | Semester-long Programs | | | | | | | | | | | | | | | | | | | | | | | | |
| Tailored Term 1 (Summer + Term 1) | 24 | 30 | 4 | 4 Jan | 4 Jan | 15 May | 097363D | 097353F | | | | | | | | | | | | | | | | | | | | | | | | | | |
| Term 1 | 18 | 22.2 | 3 | 11 Feb | 15 Feb | 15 May | 097364C | 097354E | | | | | | | | | | | | | | | | | | | | | | | | | | |
| Double Term 1 + Term 2 | 24-36 | 30-45 | 4-6 | 11 Feb | 15 Feb | 28 Aug | 097366A | 097360G | | | | | | | | | | | | | | | | | | | | | | | | | | |
| Term 2 | 18 | 22.5 | 3 | 27 May | 31 May | 28 Aug | Program Not Open | 097354E | | | | | | | | | | | | | | | | | | | | | | | | | | |
| Double Term 2 + Term 3 | 24-36 | 30-45 | 4-6 | 27 May | 31 May | 11 Dec | Program Not Open | 097360G | | | | | | | | | | | | | | | | | | | | | | | | | | |
| Tailored Term 3 (Winter + Term 3) | 24 | 30 | 4 | 12 Aug | 16 Aug | 11 Dec | 097367M | 097356C | | | | | | | | | | | | | | | | | | | | | | | | | | |
| Term 3 | 18 | 22.5 | 3 | 9 Sep | 13 Sep | 11 Dec | 097368K | 097357B | | | | | | | | | | | | | | | | | | | | | | | | | | |
| Term 3 + Summer | 24 | 30 | 4 | 9 Sep | 13 Sep | 5 Feb 2022 | 097371D | 099644A | | | | | | | | | | | | | | | | | | | | | | | | | | |
| Double Term 3 + Term 1 | 24-36 | 30-45 | 4-6 | 9 Sep | 13 Sep | 14 May 2022 | 097366A | 097360G | | | | | | | | | | | | | | | | | | | | | | | | | | |
| Year-long Programs | | | | | | | | | | Year-long Programs | | | | | | | | | | | | | | | | | | | | | | | | |
| Term 1 + Term 2 + Term 3 | 48 | 60 | 8 | 11 Feb | 15 Feb | 11 Dec | 097365B | 097355D | | | | | | | | | | | | | | | | | | | | | | | | | | |
| Term 2 + Term 3 + Term 1 | 48 | 60 | 8 | 27 May | 31 May | 14 May 2022 | Program Not Open | 097358A | | | | | | | | | | | | | | | | | | | | | | | | | | |
| Tailored Term 3 + Tailored Term 1 | 48 | 60 | 8 | 12 Aug | 16 Aug | 14 May 2022 | 097370E | 097359M | | | | | | | | | | | | | | | | | | | | | | | | | | |
| Term 3 + Term 1 + Term 2 | 48 | 60 | 8 | 9 Sep | 13 Sep | 27 Aug 2022 | 097369J | 097358A | | | | | | | | | | | | | | | | | | | | | | | | | | |

Key

Summer (January)

Term 1

Term 2

Winter (August)

Term 3

Simply Tailor your Term.

We offer hundreds of courses across nine academic faculties. Most of these are open to Study Abroad and Exchange students.

How do you know what term is best for you? Work out how many credits you need to transfer back to your home institution, which term dates suit, and build your program from there.

Standard Terms:

For those wanting 18 UNSW Credits (22.5 ECTS/3 courses)

Tailored Terms:

For those wanting 24 UNSW Credits (30 ECTS/4 courses). Students take 1 course in either our Summer (January) or Winter (August) Term, and 3 courses in a standard Term.

Double Terms:

For those wanting even more flexibility, you can choose 24 UNSW Credits (30 ECTS/4 courses) or add extra courses to boost this to 30 UNSW Credits (37.5 ECTS/5 courses). For the super studious, you can even do 36 UNSW Credits (45 ECTS/6 courses).

Double Terms can be like taking a Summer School and Semester away! Term 1 + Term 2 may align with your Spring Semesters plus Summer, while Term 2 + Term 3 your Summer plus Autumn Semester.

Sample options:

Here are some examples of how you can plan your Study Abroad experience with our flexible study plans.



Michael

Term 3

Specialisation:
Social Science

Michael would like to learn something about Australia culture while he is at UNSW.

Term 3

- Aboriginal Sydney
- Media, Society, Politics
- Australian Drama



Codie

Term 3 + Summer

Specialisation:
Computer Science

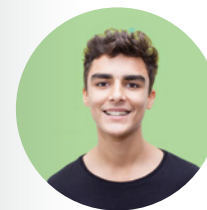
Codie is from Germany and her semester aligns better with Term 3 + Summer than Tailored Term 3.

Term 3

- Concepts of Programming and Languages
- Digital Circuits and Systems
- Robotic Software Architecture

+ Summer

Artificial Intelligence



Sean

Term 1 + Term 2

Specialisation:
Engineering

Sean has very specific Engineering courses that he needs to take while at UNSW, so taking Term 1 + Term 2 gives him more core courses to choose from.

Term 1

- Computational Fluid Dynamics
- Mechanical Design

Term 2

- Advance Thermofluids
- Fundamentals of Acoustics and Noise



Tami

Tailored Term 1

Specialisation:
Business

Tami was really happy to see the range of Business courses available during the Summer Term.

Summer

Advanced Financial Reporting

+ Term 1

- Business Forecasting
- Business and Corporate Strategy
- International and Global Marketing

Enjoy even more flexibility with our Blended Tailored Terms.

Can't make it to the UNSW campus for the full Study Abroad program or want some more travel? No worries. We have options to suit.

The Home & Away Term

Online: 6 UNSW Credits (7.5 ECTS/1 course)
Ideal for those whose semester at home overlaps with our Summer or Winter term. Take our online course while finishing your semester!

Then on campus:
18 UNSW Credits (22.5 ECTS/3 courses)

Sample options:



Brad

Home & Away

Summer + Term 1

Specialisation:

International Studies

Brad's home university has an academic calendar that continues into January, so Brad couldn't make the Summer Term. The Home & Away option is perfect!

Summer (online course)

- International Business Finance

+ Term 1

- Key updates in International Studies
- Research Methods in International Studies
- Indigenous Studies and the Colonial World

The Travel & Stay Term

Online: 6 UNSW Credits (7.5 ECTS/1 course)
Arrive in time for our orientation, and then enjoy being a digital nomad anywhere in Australia while you take the online course!

Then on campus:
18 UNSW Credits (22.5 ECTS/3 course)

Sample options:



Michelle

Travel and Stay

Summer + Term 1

Specialisation:

Management

Michelle loves Management studies and the beach. She decided to travel to Cairns during the Summer Term.

Summer (online course)

- Accounting and Financial Management 1B

+ Term 1

- Managing Innovation and Organisational Change
- Managing Across Cultures
- Career Management

These options are for students who:

- Require 24 UNSW Credits (30 ECTS/4 courses)
- Have commitments or want to travel during January or August
- Are self-driven
- Are able to complete an online course as part of their Study Abroad experience.

Chat to your Study Abroad/Exchange Office to see if you are eligible to participate.

Choose something that fits with your degree

or challenge yourself with something new.

We offer thousands of courses. So, you can choose something that adds to what you're studying back home or branch out with a fun elective. Check out some below or take a look at all our courses here:

handbook.unsw.edu.au

Art & Design

- Animation
- Art history and theory
- Ceramics
- Curating
- Critical theory
- Design process
- Design computing
- Digital imaging
- Drawing
- Film
- Graphic design
- Interactive media
- Jewellery
- Metal casting
- Museum studies
- New media
- Object design
- Painting
- Photography
- Printmaking
- Programmable design & performance
- Spatial design
- Sound
- Studio lighting
- Textiles
- Video
- 3D modelling
- 3D computer-aided design

artdesign.unsw.edu.au

Arts & Social Sciences

- Advertising
- Anthropology
- Asian studies
- Australian studies
- Chinese studies
- Communication
- Creative writing
- Cultural studies
- Criminology and criminal justice
- Dance studies
- Development studies
- English literary studies
- Environmental humanities
- European studies
- Film studies
- French studies
- German studies
- History
- Indigenous studies
- Indonesian studies
- International relations
- International studies
- Italian studies
- Japanese studies
- Journalism
- Korean studies
- Latin America studies
- Linguistics
- Literature
- Media and culture studies
- Modern Greek studies
- Music
- Philosophy
- Politics
- Public relations
- Screen and sound production
- Social science and policy
- Social work
- Sociology
- Spanish studies

- Theatre and performance studies
- Women's and gender studies

arts.unsw.edu.au

Built Environment

- Architectural computing
- Architectural studies
- Construction project management
- Computational design
- City analytics
- City planning
- Industrial design
- Interior architecture
- Landscape architecture
- Property and development
- Sustainable development
- Urban development and design

be.unsw.edu.au

Business

- Accounting
- Actuarial studies
- Banking*
- Business analytics
- Business law
- Business strategy
- Economics
- Finance
- Financial technology
- Human resource management
- Information systems
- International business
- Management
- Organisation and management
- Marketing
- Risk management*
- Social impact*
- Strategy and entrepreneurship*
- Taxation

business.unsw.edu.au

Engineering

- Aerospace engineering
- Bioinformatics
- Biomedical engineering*
- Ceramic engineering
- Chemical engineering
- Civil engineering
- Computer science
- Electrical engineering
- Energy systems*
- Environmental engineering
- Geothermal engineering*
- Industrial engineering
- Manufacturing engineering
- Mechanical engineering
- Mechatronic engineering
- Mining engineering
- Nuclear engineering*
- Petroleum engineering
- Photonic engineering
- Photovoltaic engineering
- Production engineering
- Renewable energy engineering
- Software engineering
- Solar energy engineering
- Spatial information systems
- Surveying
- Telecommunications
- Transport engineering

eng.unsw.edu.au

Law

- Australian legal system
- Criminal law
- Human rights law
- Religion
- Sport and law

To be eligible to enrol in the full range of courses in Law, students must be enrolled in a Law degree at home.

law.unsw.edu.au

Medicine

- Anatomy
- Exercise physiology
- Health and exercise science
- Neuroscience
- Pathology
- Pharmacology
- Physiology
- Public health[^]

[^] Study Abroad students cannot enrol in clinical Medicine courses.

med.unsw.edu.au

Science

- Anatomy
- Aviation management
- Biochemistry
- Bioinformatics
- Biology
- Biotechnology
- Chemistry
- Climate systems science
- Conservation
- Data science
- Earth science
- Ecology
- Environmental management
- Environmental science
- Evolutionary biology
- Food science and technology
- Genetics
- Geography
- Immunology
- Marine science
- Materials science and engineering
- Mathematics
- Medicinal chemistry
- Metallurgy
- Microbiology
- Molecular and cell biology
- Neurobiology

- Neuroscience
- Nutrition
- Oceanography
- Pathology
- Pharmacology
- Physics
- Physiology
- Psychology
- Quantum mechanics
- Remote sensing
- Solid state physics
- Spatial information systems
- Statistics
- Sustainability
- Synesthetic Biology
- Zoology

science.unsw.edu.au

*Only available at postgraduate level



UNSW Library



Highlighted Courses

Australian Studies Courses. Learn more about our land and culture.

While you're studying abroad in Sydney, why not learn more about the people, history, and landscape that make up our country?

Enrich your international experience and take one of our specialised Australian-focused courses.

- Aboriginal Sydney
- Sydney, History, Landscapes, People
- Indigenous Australia
- Introduction to Sydney Environment
- The Marine Environment

Study the Great Barrier Reef for course credit.

Don't just read about the reef. Go there. Sustainable Tourism in Regional Australia is a unique course that includes a field excursion to Lady Elliot Island. You'll learn how to assess the physical, social and economic sustainability of the Barrier Reef marine park.

Credit load: 6 UNSW Credits

Internships and Research

Work Integrated Learning – 6 UNSW Credits

CDEV3000 Practice of Work is a Work Integrated Learning (WIL) course that lets you work directly with industry and community partners for credit towards, plus strengthen your work-readiness skills and boost your employability.

Your team of up to five students will be a mix of students from different disciplines across UNSW and will have a maximum of two study abroad/ exchange students, allowing you to integrate with UNSW students.

Example Projects from 2020

- International Health, Volunteers and Soft Power Diplomacy
- Understanding and Promoting Innovation in Regional NSW

Eligibility

- Approval from your home institution
- Completed equivalent of 30 UNSW Credits
- Undergraduate student
- Selection is based on an application and an interview

More Information

E: studyabroad@unsw.edu.au
W: wil.unsw.edu.au

Taste of Research Projects – 6 UNSW Credits

UNSW offers a series of courses that allow you to have a taste of research. You will work closely with a UNSW academic and complete 105 hours of research assistant duties, followed by 45 hours writing a reflection of the experience. This is a great opportunity to connect with faculty and researchers if you are keen to progress into research in the future.

Example Projects from 2020

- A Voice for First Nations in Australia
- Colonial Voices and the Remaking of the British Empire
- Access to justice: Forensic linguistic analysis of interpreted court proceedings
- Rioting and the Literary Archive
- Evaluating university-based, pro bono tax clinics for vulnerable taxpayers

Eligibility

- Approval from your home institution
- Selection is based on an application and project-specific requirements

More Information

E: studyabroad@unsw.edu.au
W: student.unsw.edu.au/erp

Study Abroad

University students and gap year students from anywhere around the world can come to UNSW Sydney through our Study Abroad Program. An official transcript will be issued to your home university upon conclusion of your studies at UNSW, and credit transfer back to your home university is a possibility.

unsw.to/studyabroad

Study plans

Short programs

Choose from:
Summer Term | Term 2 | Winter Term

Semester-long programs

Choose from:
Standard Terms:
Term 1 | Term 2 | Term 3
Tailored Terms:
Tailored Term 1 | Tailored Term 3 | Term 3 + Summer Term

Double Terms:
Term 1 + Term 2 | Term 2 + Term 3 | Term 3 + Term 1

Year-long programs

Choose from:
Term 1 + Term 2 + Term 3 | Term 2 + Term 3 + Term 1
Term 3 + Term 1 + Term 2 | Tailored Term 3 + Tailored Term 1

What you can study

You can study almost any course at UNSW Sydney as long as you have the required background knowledge. You may also be able to take Practice of Work to gain industry experience or research placement.

A complete list of courses can be found in the UNSW Online Handbook
handbook.unsw.edu.au

We recommend you check our Online Timetable to ensure that your chosen courses are available.

[Timetable.unsw.edu.au](https://timetable.unsw.edu.au)

Enrolment is subject to course availability and your academic background. It is important to be flexible with your course choice as some fill up quickly or may not be offered in a particular term.



UNSW main walkway



Science Theatre

Entry requirements

A cumulative grade point average of 3.0 on a 4.0 grading scale – or equivalent standard from your home institution.

English requirements

You may be asked to provide evidence of your English proficiency to study at UNSW depending on your educational background and citizenship.

Enrolment requirements

- 18 UNSW Credits per Standard Term (22.5 ECTS/3 courses)
- 24 UNSW Credits per Tailored Term (30 ECTS/4 courses)
- 24~36 UNSW Credits per Double Term (30~45 ECTS/4~6 courses)
- 48 UNSW Credits per Year (60 ECTS/8 courses)

2021 Tuition Fees

| Program | Standard term fee | Tailored term fee |
|-----------------------|-------------------|-------------------|
| Undergraduate program | A\$9,990 | A\$13,320 |
| Postgraduate program | A\$10,560 | A\$14,080 |

Overseas Student Health Cover (OSHC)

Students are required to have OSHC for the duration of their student visa (except holders of Norwegian and Belgium passports). Study Abroad will purchase OSHC on your behalf through our preferred provider.

Please check the UNSW Study Abroad website for the latest OSHC costs. Visit unsw.to/studyabroad

Application process

1. Create a profile

unsw.openacademies.com/registerforstudyabroad

2. Start application

Ensure that the name on your application is the same as on your passport. Make sure that you choose all the Terms that you want to study at UNSW for.

3. Submit application

Prepare the following documents as a pdf to submit with your application:

1. Your most recent official academic transcript (with English translation)
2. The ID page of your passport
3. Proof of English language Proficiency if required

4. Choose courses

Choose courses that you wish to study while at UNSW and submit them for approval by UNSW. Check that the courses you wish to study are offered in the term you will be at UNSW and will be approved by your home institution.

5. Receive offer

If your application is successful, you will receive an offer letter by email.

6. Accept offer

Accept your offer online and pay your deposit and/or fees if applicable.

7. Housing

Start to consider if you want to stay off campus, or apply for on-campus accommodation.

8. Receive CoE and Apply for Visa

You will receive a Confirmation of Enrolment (CoE) after you accept your offer. This is required for your visa application.

9. Book flights

Ensure that you will arrive in time for our orientation program.

Study Abroad

UNSW Sydney
T: +61 2 9385 3179
E: studyabroad@unsw.edu.au
W: unsw.to/studyabroad



Good on the gram? Show us what you got.

Snap your way to some financial help.

Want to share your study abroad experience with friends and classmates back home? We offer a limited number of Social Media Ambassador Awards of A\$2,000 each to international students completing an inbound Study Abroad Program at UNSW Sydney.

These competitive awards give you an opportunity to showcase what life at UNSW is really like through your personal social media accounts.

For more details on what's involved and how to apply, please contact the Study Abroad team at studyabroad@unsw.edu.au

Eligibility

Applicants must:

- Be international students holding an offer for an inbound Study Abroad program at UNSW Sydney
- Have a public Instagram account
- Be active Instagram users and post on a regular basis
- Must not be a previous recipient of the award

Award Value

Recipients are rewarded a A\$2,000 discount on their tuition fees in either Term 1 or Term 3 (including Tailored and Double Terms) of their chosen inbound Study Abroad program at UNSW Sydney.

Applying is easy.

1. Candidates must submit either a 30-60 second video or three collated images to their public Instagram account on the topic 'A Day in my Home City' during the application period. The hashtag #UNSWMAA2021 should also be included in this post.
2. An application form will need to be requested from the UNSW Study Abroad Office via email at: studyabroad@unsw.edu.au
3. The completed application form should be submitted to the UNSW Study Abroad Office via email (studyabroad@unsw.edu.au) during the application period outlining the student's personal details and a link to their Instagram account/handle along with the date of when their entry was posted on Instagram.

For Further Information

Please visit unsw.to/studyabroad or contact UNSW Study Abroad at studyabroad@unsw.edu.au



Photo credit: @soniallorente
Port Stephens, Anna Bay Sand Dunes

Student Exchange

University students from partner universities can come to UNSW Sydney through our Student Exchange Program. An official transcript will be issued to your home university upon conclusion of your studies at UNSW, and credit will be transferred back to your home institution.

Check if your university is one of our partners at students.unsw.edu.au/partners

Study plans

Semester-long programs

Choose from:

Standard Terms:

Term 1 | Term 3

Tailored Terms:

Tailored Term 1 | Tailored Term 3 | Term 3 + Summer Term

Double Terms:

Term 1 + Term 2 | Term 3 + Term 1

Year-long programs

Choose from:

Term 1 + Term 2 + Term 3 | Term 3 + Term 1 + Term 2 | Tailored Term 3 +

Tailored Term 1

What you can study

You can study almost any course at UNSW Sydney as long as you have the required background knowledge and approval from your home university.

A complete list of courses can be found in the UNSW Online Handbook handbook.unsw.edu.au

We recommend you check our Online Timetable to ensure that your chosen courses are available.

[Timetable.unsw.edu.au](https://timetable.unsw.edu.au)

Enrolment is subject to course availability and your academic background. It is important to be flexible with your course choice as some fill up quickly or may not be offered in a particular term.



Quadrangle Lawn walkway



Science Theatre lawn

Entry requirements

You must be nominated by the Exchange Office at your home university.

English requirements

You may be asked to provide evidence of your English proficiency to study at UNSW depending on your educational background and citizenship.

Enrolment requirements

- Standard Term: 18 UNSW Credits (22.5 ECTS/3 courses)
- Tailored Terms: 24 UNSW Credits (30 ECTS/4 courses)
- Double Terms: 24~30 UNSW Credits (30~45 ECTS/4~6 courses)
- Year Program :48 UNSW Credits (60 ECTS/8 courses)

Tuition Fees

You pay your usual tuition fees to your home university, not UNSW.

Overseas Student Health Cover (OSHC)

Students are required to have OSHC for the duration of their student visa (except holders of Norwegian, Swedish and Belgian passports). Details on how to purchase OSHC are provided on your acceptance.



Application process

1. Nomination

You need to be nominated by your home university, and they will choose one of our study plans for you. After being nominated, an email with application instructions will be sent to you.

2. Start application

Ensure that the name on your application is the same as on your passport.

3. Submit application

Prepare the following documents as a pdf to submit with your application:

1. Your most recent official academic transcript (with English translation)
2. The ID page of your passport
3. Proof of English language Proficiency if required

4. Choose courses

Choose courses that you wish to study while at UNSW and submit them for prerequisite approval by UNSW. Check that the courses you wish to study are offered in the term you will be at UNSW and will be approved by your home institution.

5. Receive offer

If your application is successful, you will receive an offer letter by email.

6. Accept offer

Accept your offer online.

7. Housing

Start to consider if you want to stay off campus, or apply for on-campus accommodation.

8. Purchase your OSHC

You will receive details about purchasing OSHC with your offer.

9. Receive CoE and Apply for Visa

You will receive a Confirmation of Enrolment (CoE) after you accept your offer and purchase OSHC. This is required for your visa application.

10. Book flights

Ensure that you will arrive in time for our orientation program.

Student Exchange

UNSW Sydney

T: +61 2 9385 3179

E: exchange@unsw.edu.au

W: unsw.to/studyabroad

Study Abroad Research Practicum

University students from anywhere in the world can come to UNSW through our Study Abroad Research Practicum for short-term research.

Study plans

There is flexibility in when you commence, with UNSW welcoming students weekly.

What you can study

You will create a research plan with your supervisor and home university before you arrive at UNSW. You will have access to services, libraries, campus amenities and liability insurance for UNSW premises.

UNSW's research focus includes the following areas:

- Biomedical Sciences
- Contemporary Humanities and Creative Arts
- Defence and Security
- Fundamental and Enabling Sciences
- ICT, Robotics and Devices
- Law, Business and Economics
- Next Generation Materials and Technologies
- Social Policy, Government and Health Policy
- Water, Climate, Environment and Sustainability

Application process

1. Check you are eligible

You will need to ensure you meet the UNSW Entry and English Language requirements.

2. Find a supervisor

Contact UNSW academics to find a suitable supervisor and negotiate start and finish dates for your practicum.

3. Nomination

The academic then emails practicum@unsw.edu.au with your full name, email address, host UNSW school, stay dates and home university. Nominations must be received 3 months in advance of your proposed start date.

4. Application

The Study Abroad Research Practicum team will email you with details on how to fill in an online application.

5. Receive offer

If your application is successful, you will receive an acceptance letter by email.

6. Purchase your OSHC

OSHC is required if you are coming to UNSW on a student visa. Send the receipt to Study Abroad Research Practicum Team.

7. Receive CoE and Apply for Visa

You will receive a Confirmation of Enrolment (CoE) after you accept your offer and purchase OSHC. This is required for your visa application. Make travel arrangements, book flights and accommodation once you receive your visa.

8. On arrival at UNSW

Ensure that you attend in-person to register your arrival at the Study Abroad and Exchange office before you start your research at UNSW.

Study Abroad Research Practicum

UNSW Sydney
T: +61 2 9385 3179
E: practicum@unsw.edu.au

Entry Requirements

A cumulative grade point average of 3.0 on a 4.0 grading scale – or equivalent standard from your home institution.

You also need to find an academic at UNSW who agrees to supervise your research.

English requirements

You will need to ensure you meet the UNSW English Language requirements and depending on your educational background and citizenship, you may be asked to provide evidence of your English proficiency to study at UNSW.

Tuition fees

Tuition fees of A\$1,000 per term. One off admission fee of A\$330.

Overseas Student Health Cover (OSHC)

Students are required to have OSHC for the duration of their student visa (except holders of Norwegian and Belgian passports). Details on how to purchase OSHC are provided on your acceptance.

Places to live.

Room to grow.



Whitehouse near UNSW Village

The UNSW campus is in the Eastern Suburbs of Sydney and many students choose to live by the beach in Coogee, Clovelly, Maroubra or iconic Bondi Beach. UNSW is a commuter campus, so, the majority of local and international students live off campus. Sydney is a safe, accessible and vibrant city, with public transport connecting the UNSW campuses to nearby beaches and the city centre.

See all our accommodation options and get advice at joom.ag/8bte

On Campus Colleges

Both affiliated and UNSW Colleges provide a choice of full-board, partly catered and self-catered style accommodation. There are male-only and female-only options, as well as mixed male and female accommodation. Most colleges cater for dietary requirements like halal, kosher and vegetarian.

On Campus Apartments

Affiliated and UNSW Apartments offer independent-style, self-catered living for students. Costs vary depending on the number of rooms and the location.

Off Campus Student Accommodation

Sydney has several accommodation providers who specially cater to students. Accommodation is located around Sydney – generally around 20-50 minutes by public transport from the UNSW campus. These options offer high-quality rooms with air conditioning and extra services. Look for Iglu and Urbanest.

Applications

Details on how to apply will be sent to you after you've been accepted into a Study Abroad or Exchange program. There is one application portal for UNSW Colleges and Apartments, but separate processes for the affiliated and private providers.



The Village



Iglu Central Park Studio



Shalom College room

Rental property

Furnished and unfurnished flats and houses are also available to rent in the suburbs around UNSW Sydney. Depending on the location, number of rooms and general condition of the property, rent will vary considerably. For example, rental prices for a two-bedroom flat may vary between A\$380 and A\$550 per week. When renting a flat or house, renters are usually required to sign a six-month lease. A bond of four weeks' rent is payable before you move in. Wifi, gas and electricity are usually not included.

Temporary accommodation

If you haven't confirmed your university accommodation before you arrive, we recommend you allow three to four weeks before classes begin to look for private housing to give you time to settle in and attend orientation sessions. Be sure to book short-term accommodation first, then look for long-term options in person. Short-term accommodation can include private hotels, motels, hostels, lodges or furnished apartments ranging from A\$45 to A\$300 per day.

Under 18s

Arrangements must be made for students under 18 years of age. These requirements are in line with Australian Government regulations for the care and welfare of international students under 18.

student.unsw.edu.au/visa18



UNSW Library lawn

Estimated cost of living off campus versus living on campus.

(Costs listed in Australian dollars)

| | Shared House/ Unit | 1 Bedroom Unit | On Campus College (Catered) | On Campus College (Self- catered) | Iglu (non-catered) and Urbanest (Catered) |
|--------------------------------------------------------------|----------------------------------------|----------------------------------------|-----------------------------------|-----------------------------------------|-------------------------------------------------|
| Weekly Rent | \$250-\$350 | \$470-\$650 | \$586 | \$428 | \$489 (non-catered) - \$634 (catered) |
| Groceries and eating out | \$80 - \$200 | \$80 - \$200 | \$10 - \$50 | \$80 - \$200 | \$30 - \$150 |
| Utilities (gas, electricity) | \$35 - \$140 | \$35 - \$140 | -- | -- | -- |
| Phone and internet | \$20 - \$55 | \$20 - \$55 | \$20 - \$55 | \$20 - \$55 | \$20 - \$55 |
| Public transport | \$15 - \$55 (depending on location) | \$15 - \$55 (depending on location) | -- | -- | \$15 - \$55 (depending on location) |
| Entertainment | \$80 - \$150 | \$80 - \$150 | \$80 - \$150 | \$80 - \$150 | \$80 - \$150 |
| Weekly total (average) | \$715 | \$975 | \$768 | \$720 | \$781 (non-catered) - \$816 (catered) |
| Total estimate Tailored Term (21 weeks total) | \$15,015 | \$20,475 | \$16,128 | \$15,120 | \$16,401 - \$17,136 |

Living costs are indicative only and will vary based on the location, number of people you live with and the condition of the housing.

For more information, visit student.unsw.edu.au/approximate-weekly-costs and studyinaustralia.gov.au/global/live-in-australia/living-costs.

*Costs will vary depending on the type of accommodation and catering offered.

Still curious?

Contact details

Study Abroad and Exchange are part of External Relations. We are committed to making your experience at UNSW an enjoyable one.

Address

Study Abroad and Exchange
Rm G30 Ground Floor, West Wing
John Goodsell Building
UNSW SYDNEY NSW 2052
Australia

Contact us

T: +61 2 9385 3179

Exchange

E: exchange@unsw.edu.au
W: unsw.to/studyabroad

Study Abroad

E: studyabroad@unsw.edu.au
W: unsw.to/studyabroad

Study Abroad Research Practicum

E: practicum@unsw.edu.au
W: international.unsw.edu.au/research-practicum

Social media

[!\[\]\(56549452e01ca28bdf2500ced9653143_img.jpg\)](#) [!\[\]\(235f8f87c36d896db1ddff2848125c86_img.jpg\)](#) [!\[\]\(4c4afa2dcab95991c60f31fce713d641_img.jpg\)](#) [!\[\]\(1205f6f8a2eee5164f325ab7908828d5_img.jpg\)](#) [!\[\]\(5649178bcab2dc69cdc8b143e41f5574_img.jpg\)](#) @UNSW
#UNSWStudyAbroad
#UNSWExchange

[!\[\]\(1f56542a42e2413e44a2b2023033aa2e_img.jpg\)](#) @ozunsw

[!\[\]\(19d44b37fb4fa155bf9d60c77a3d3cb2_img.jpg\)](#) @university-of-new-south-wales

[!\[\]\(5a351309c3b87e4420622c1f0e57efc0_img.jpg\)](#) i.youku.com/i/UNDQzNDA1OT-k4NA==

[!\[\]\(bff896c19919791b89ab521f039b410a_img.jpg\)](#) @unswstudyabroad

[!\[\]\(23a2e9ddc7bb0ef55393d38b772a848d_img.jpg\)](#) WeChat ID: UNSW_Australia

Applying to UNSW

Online Handbook
handbook.unsw.edu.au

Degree Finder
degrees.unsw.edu.au

Online Timetable
timetable.unsw.edu.au

Study Abroad Application Portal
unsw.openacademies.com/registerforstudyabroad

English Language Requirements
unsw.to/studyabroad

More about UNSW Sydney

UNSW Home page
unsw.edu.au

Student Life@UNSW
unsw.edu.au/life

UNSW Alumni
alumni.giving.unsw.edu.au

Student services

Accommodation
accommodation.unsw.edu.au

University Library
library.unsw.edu.au

Careers and Employment
careers.unsw.edu.au

Arc@UNSW
arc.unsw.edu.au

Government resources

Student visas
immi.homeaffairs.gov.au

Australian diplomatic missions
dfat.gov.au/mission

